

Quick Start Guide
FieldMaxII™ Software Installation
(FieldMaxII-TOP, -TO, and -P)

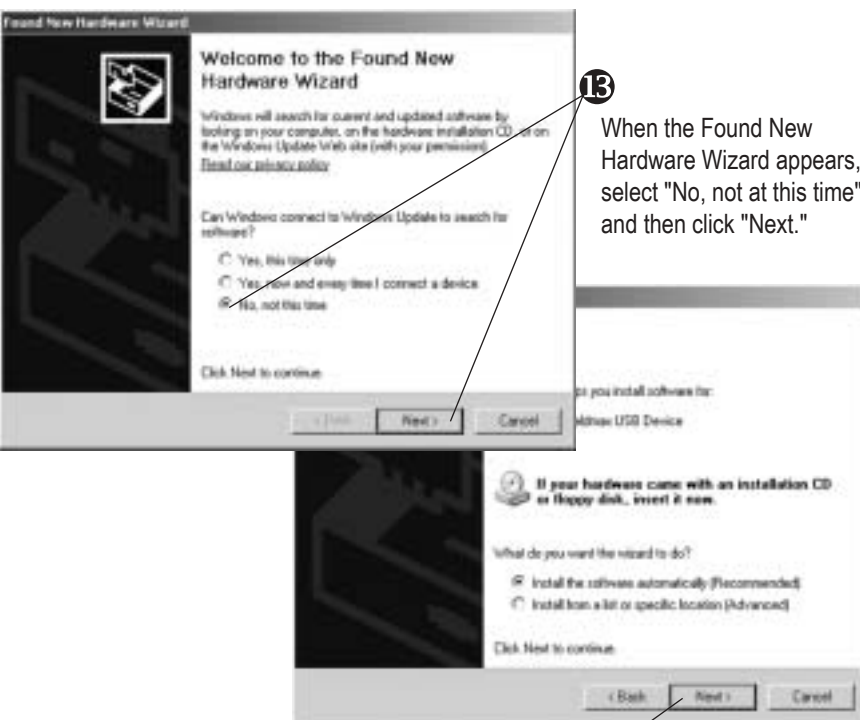


12 Click "Finish" to close the Wizard.



15 Click "Next" to complete the installation.

The FieldMaxII installation requires the Found New Hardware Wizard to run twice—the following step is the beginning of the second Wizard cycle.



13 When the Found New Hardware Wizard appears, select "No, not at this time" and then click "Next."

14 Click "Next" to automatically install the software.

If this FieldMaxII is connected to a new USB port, or an additional FieldMax II is connected, the Found New Hardware Wizard will activate and must be completed again.

Contact Information

USA
Phone: 1.800.343.4912
Fax: 971.327.2777
E-Mail: info_service@Coherent.com
Europe
Phone: +49-6071-968-0
Fax: +49-6071-968-499
E-Mail: info_service@Coherent.com
International
Phone: 971.327.2700
Fax: 971.327.2777
E-Mail: info_service@Coherent.com

For the latest Customer Service information, refer to our website: www.Coherent.com.

Coherent and the Coherent Logo are registered trademarks of Coherent, Inc. FieldMaxII is a trademark of Coherent, Inc.

FieldMaxII™ Software Installation Quick Start Guide
 © Coherent, Inc. 10/2005. Printed in the U.S.A.
 Part No. 1096359, Rev. AA



This guide explains how to install the FieldMaxII™ software. For detailed information about the FieldMaxII, refer to the user manual that shipped with the meter.



Do not connect the FieldMaxII to the USB PC port at this time. The software must be installed *before* physically connecting the meter to the computer.

Software Installation

1 Insert the FieldMaxII CD into your CD-ROM drive. If Autorun is enabled on your system, installation will start automatically; otherwise, select Run from the Start menu and then type **D:\Setup.exe** (substitute the appropriate letter of your CD-ROM drive for **D**).

2 Click "Next" on the Welcome screen.

3 Read the License Agreement. Select "I accept the license agreement" and then click "Next."

4 Fill in your name and organization. Select "Only for me (your name)" and click "Next."

5 Select the default destination folder by clicking "Next."

6 Click "Next" to automatically install the LabVIEW[®] drivers and create a FieldMaxII desktop icon.

7 Click "Continue Anyway."

8 Click "Finish" to complete the software installation and view the README file.



Connect the FieldMaxII to the USB PC port before continuing with this installation.

9 When the Found New Hardware Wizard appears, select "No, not at this time" and then click "Next."

10 Click "Next" to automatically install the software.

11 Click "Continue Anyway."